

Connectors

Board-to-Board Connectors

Board-to-Board Connectors WR-BTB

Pitch	0.8 mm ~ 1 mm
Gender	Female Receptacle ~ Male Plug
Type	Vertical
Mount	SMT



Pin Header / Socket Header WR-PHD

Pitch	1.27 mm ~ 2.54 mm
Mount	SMT ~ THT
Type	Angled ~ Straight Low Profile
Rows	Dual ~ Single



Mini Module Connector WR-MM | PCB Type

Gender	Female ~ Male IDC
Mount	SMT ~ THT
Type	Angled ~ Straight
Polarization	No ~ Yes
Pins	4 ~ 26



Wire-to-Board Connectors

Mini Module Connector WR-MM | Cable Type

Gender	Male IDC ~ Transition
Pins	4 ~ 26
Pitch	2.54 mm



REDFIT IDC SKEDD Connector WR-WST

Pitch	2.54 mm
Pins	4 ~ 20
Mount	SKEDD



Wire-to-Board Connectors

WR-BHD Box Headers

Pitch	2 mm ~ 2.54 mm
Gender	Male
Mount	SMT ~ THT
Type	Angled ~ Straight
Pins	6 ~ 64



WR-BHD IDC Connectors & Tools

Pitch	2 mm ~ 2.54 mm
Gender	Female ~ Male
Pins	6 ~ 64



Ribbon Flat Cable WR-CAB

Pitch	1 mm ~ 1.27 mm
-------	----------------



Fast Connector WR-FAST

Pitch	5.08 mm ~ 7.62 mm
Mount	THT
Type	Right Angled ~ Vertical



WR-WTB Male Headers

Pitch	1 mm ~ 3.96 mm
Type	Horizontal ~ Vertical
Mount	SMT ~ THT



WR-WTB Female Terminal Housing, Crimp & Pre-crimped Contacts

Pitch	1 mm ~ 3.96 mm
Type	Crimp Terminal ~ Terminal Housing



Wire-to-Board Connectors

WR-MPC4 Male Headers

Pitch	4.2 mm
Mount	THT
Type	Right Angled ~ Vertical
Pins	2 ~ 24



WR-MPC4 Female Receptacle, Terminals, Pre-crimped Contacts

Pitch	4.2 mm
Type	Crimp Terminal ~ Receptacle Housing
Pins	2 ~ 24



WR-MPC3 Male Headers

Pitch	3 mm
Mount	SMT ~ THT
Type	Right Angled ~ Vertical
Pins	2 ~ 24



WR-MPC3 Female Receptacle, Terminals, Pre-crimped Contacts

Pitch	3 mm
Type	Crimp Terminal ~ Receptacle Housing
Pins	2 ~ 24



Pre-crimped Wire WR-WTB, WR-MPC4, WR-MPC3

Gender	Tool
Type	Crimping Tool ~ Wear Parts



FPC Connector and FFC Cable

ZIF Connector WR-FPC

Pitch	0.5 mm ~ 1 mm
Mount	SMT
Type	Horizontal ~ Vertical
Contact Design	Bottom Contact ~ Type A



LIF Connector WR-FPC

Pitch	1 mm
Mount	SMT
Type	Horizontal ~ Vertical
Contact Design	Top Contact ~ Type A



Flat Flexible Cable WR-FFC

Pitch	0.5 mm ~ 1 mm
Type	Type 1 ~ Type 2
Length	50 mm ~ 200 mm



Input/ Output Connectors

USB Connector WR-COM

Mount	SMT ~ THT
Type	Horizontal ~ Vertical
Application	Micro USB 2.0 ~ USB 3.1



HDMI Connector WR-HDMI

Mount	SMT
Type	Horizontal
Application	HDMI ~ Mini HDMI



Input/ Output Connectors

Card Connector WR-CRD

Type	Header ~ Shrouded
Application	Compact Flash ~ Nano SIM



Modular Jacks WR-MJ

Type	45° ~ Vertical
Mount	SMT ~ THT
Number of Pins (xPxC)	4P4C ~ 8P8C
Tab Position	Down ~ Up & Down



WR-DSUB Female Connectors

Type	Angled ~ Terminal/ Contact
------	----------------------------



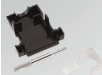
WR-DSUB Male Connectors

Type	Angled ~ Terminal/ Contact
------	----------------------------



WR-DSUB Housing, Toolings & Accessories for D-SUB

Type	Small Top Entry ~ Top Entry
------	-----------------------------



Coaxial Connectors

WR-SMA

Frequency Range	DC ~ 18 GHz
Impedance	50 Ω
Gender	Jack ~ Plug
Orientation Type	Right Angle ~ Straight
Mount	SMT ~ THT
Interface	MIL-STD-348



WR-RPSMA

Frequency Range	DC ~ 18 GHz
Impedance	50 Ω
Gender	Jack
Orientation Type	Right Angle ~ Straight
Mount	End Launch ~ THT
Interface	MIL-STD-348



NEW!

WR-SMB

Frequency Range	DC ~ 4 GHz
Impedance	50 Ω
Gender	Jack ~ Plug
Orientation Type	Right Angle ~ Straight
Mount	Crimp ~ THT
Interface	MIL-STD-348



WR-MCX

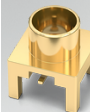
Frequency Range	DC ~ 6 GHz
Impedance	50 Ω
Gender	Jack ~ Plug
Orientation Type	Right Angle ~ Straight
Mount	Crimp ~ THT
Interface	IEC 61169-36



NEW!

WR-SMP

Frequency Range	DC ~ 12 GHz
Impedance	50 Ω
Orientation Type	Right Angle ~ Straight
Mount	THR ~ THT
Interface	MIL-STD-348



WR-MMCX

Frequency Range	DC ~ 6 GHz
Impedance	50 Ω
Gender	Jack ~ Plug
Orientation Type	Right Angle ~ Straight
Mount	Crimp ~ THT
Interface	IEC 61169-52



Coaxial Connectors

WR-UMRF

Frequency Range	DC~6 GHz
Impedance	50 Ω
Nominal Outer Cable Diameter	1.13 mm ~ 1.37 mm
Cable Jacket Color	Black ~ Grey



Adaptor WR-ADPT

Frequency Range	DC~18 GHz
Gender 1	Jack ~ Plug
Gender 2	Jack ~ Plug
Impedance	50 Ω



Extended!

Cable Assemblies WR-CXASY

Frequency Range	DC~18 GHz
Impedance	50 Ω
Cable Type	Flexible ~ Hand-Formable



WR-DC Power Jack Connectors

WR-DC Power Jack

Type	Right Angled ~ Vertical
Mount	SMT ~ THT
Shielding	Plastic ~ Shielded



Terminal Blocks

Wire Protector System WR-TBL

Pitch	3.5 mm ~ 10 mm
PCB/Cable/Panel	PCB
Wire Section	14 to 30 (AWG) 2.08 to 0.0509 (mm ²) ~ 30 to 14 (AWG) 0.05 to 2.08 (mm ²)
Rated Current [UL]	10 A ~ 16 A
Rated Current [cULus]	10 A ~ 18 A
Rated Current [VDE]	13.5 A ~ 24 A



Rising Cage Clamp System WR-TBL

Pitch	2.54 mm ~ 10.16 mm
PCB/Cable/Panel	PCB
Wire Section	6 to 20 (AWG) 13.30 to 0.52 (mm ²) ~ 30 to 18 (AWG) 0.0509 to 0.823 (mm ²)
Rated Current [UL]	10 A ~ 20 A
Rated Current [cULus]	6 A ~ 57 A
Rated Current [VDE]	10 A ~ 57 A



Screwless System WR-TBL

Pitch	2.5 mm ~ 10.16 mm
PCB/Cable/Panel	PCB
Wire Section	10 to 24 (AWG) 5.26 to 0.205 (mm ²) ~ 26 to 20 (AWG) 0.129 to 0.518 (mm ²)
Rated Current [UL]	6 A
Rated Current [cULus]	3 A ~ 30 A
Rated Current [VDE]	2 A ~ 16 A



Pluggable Cable System WR-TBL

Pitch	2.5 mm ~ 10.16 mm
PCB/Cable/Panel	Cable ~ PCB
Wire Section	12 to 22 (AWG) 3.31 to 0.129 (mm ²) ~ 30 to 14 (AWG) 0.0509 to 2.08 (mm ²)
Rated Current [UL]	12 A
Rated Current [cULus]	5 A ~ 20 A
Rated Current [VDE]	10 A ~ 20 A



Fuse Holder

WR-FSH

Cover Type	Clip Cover ~ Turn'n lock
------------	--------------------------



Battery Holder

WA-BCMH/WA-BCPH

Mount	SMT ~ THT
Battery Type	2016,2020,2025,2032 ~ 2450



LED Connectors

WR-LECO

Pitch	1.5 mm ~ 4 mm
Type	Angled ~ Straight



Switches

Tact Switches



12 x 12 mm THT WS-TATV

Height	4.3 mm ~ 8.5 mm
Operation Force	160 g ~ 360 g
Electrical Life	200000 Cycles ~ 500000 Cycles



12x12 mm SMT WS-TASV

Height	4.3 mm ~ 8.5 mm
Operation Force	160 g ~ 260 g
Electrical Life	300000 Cycles ~ 500000 Cycles



Caps for 12 x 12 mm WS-TASV/TATV

Accessory Color	Black ~ Red
-----------------	-------------



6 x 6 mm J-Hook IP67 WS-TASV

Height	3.4 mm ~ 5.1 mm
Operation Force	160 g ~ 250 g
Electrical Life	500000 Cycles ~ 1000000 Cycles

NEW!



6.2 x 4.1 mm SMT IP67 WS-TASV

Height	2.5 mm
Operation Force	160 g ~ 260 g
Electrical Life	500000 Cycles ~ 1000000 Cycles



6 x 6 mm SMT / J-Bend washable WS-TASV

Height	2.5 mm ~ 3.5 mm
Operation Force	160 g ~ 360 g
Electrical Life	200000 Cycles ~ 1000000 Cycles
Washable	Yes



6 x 6 mm SMT with ground terminal WS-TASV

Height	3.1 mm
Operation Force	160 g ~ 360 g
Electrical Life	500000 Cycles ~ 1000000 Cycles
Washable	Yes



6 x 6 mm SMT WS-TASV

Height	4.3 mm ~ 9.5 mm
Operation Force	160 g ~ 360 g
Electrical Life	200000 Cycles ~ 1000000 Cycles



6 x 6 mm THT WS-TATV

Height	4.3 mm ~ 9.5 mm
Operation Force	160 g ~ 360 g
Electrical Life	200000 Cycles ~ 1000000 Cycles

Tact Switches



6 x 6 mm THT right angled with ground terminal WS-TATU

Height	3.15 mm ~ 8.35 mm
Operation Force	160 g ~ 360 g
Electrical Life	200000 Cycles



5 x 5 mm SMT / J-Bend with ground terminal WS-TASV

Height	0.8 mm ~ 1.5 mm
Operation Force	160 g ~ 260 g
Electrical Life	200000 Cycles ~ 1000000 Cycles



Extended!

4.5 x 4.5 mm SMT WS-TASV

Height	0.55 mm ~ 3.8 mm
Operation Force	160 g ~ 260 g
Electrical Life	200000 Cycles ~ 1000000 Cycles



3.7 x 3.7 mm SMT WS-TASV

Height	0.35 mm
Operation Force	160 g
Electrical Life	500000 Cycles



6.0 x 3.5 mm SMT / J-Bend WS-TASV

Height	4.3 mm ~ 5 mm
Operation Force	160 g ~ 360 g
Electrical Life	30000 Cycles ~ 50000 Cycles



6.0 x 3.8 mm SMT / J-Bend WS-TASV

Height	2.5 mm
Operation Force	160 g ~ 260 g
Electrical Life	30000 Cycles



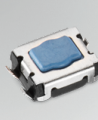
4.7 x 3.5 mm J-Bend WS-TASV

Height	2.5 mm
Operation Force	160 g ~ 260 g
Electrical Life	100000 Cycles ~ 300000 Cycles



4.2 x 3.2 mm J-Bend WS-TASV

Height	2.5 mm
Operation Force	160 g ~ 260 g
Electrical Life	50000 Cycles ~ 100000 Cycles



3.5 x 2.9 mm J-Bend WS-TASV

Height	1.7 mm
Operation Force	350 g
Electrical Life	200000 Cycles

Tact Switches

NEW!



3.0 x 2.6 mm SMT with ground terminal WS-TASV

Height	1.4 mm
Operation Force	160 g ~ 450 g
Electrical Life	200000 Times ~ 500000 Times

NEW!



6.2 x 3.0 mm SMT side push WS-TASU

Height	3.5 mm
Operation Force	160 g
Electrical Life	1000000 Cycles



4.7 x 3.5 mm SMT / J-Bend side push WS-TASU

Height	1.65 mm
Operation Force	160 g ~ 220 g
Electrical Life	100000 Cycles ~ 200000 Cycles

NEW!



4.5 x 3.4 mm J-Bend side push with Boss design WS-TASU

Height	3.3 mm
Operation Force	160 g
Electrical Life	100000 Cycles

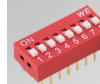
NEW!



3.5 x 2.9 mm SMT side push WS-TASU

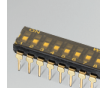
Height	1.35 mm
Operation Force	220 g
Electrical Life	100000 Cycles

Dip Switches



2.54 mm THT Compact WS-DITV

Actuator Type	Flat Type ~ Raise Type
Poles	1 ~ 12
Operation Force	800 g



2.54 mm THT Small Compact WS-DITV

Actuator Type	Flat Type ~ Raise Type
Poles	1 ~ 12
Operation Force	600 g
Washable	No ~ Yes

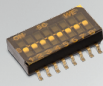


2.54 mm SMT Small Compact WS-DISV

Actuator Type	Flat Type ~ Raise Type
Poles	1 ~ 12
Operation Force	600 g
Washable	No ~ Yes

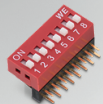
Dip Switches

1.27 mm SMT Small Compact WS-DISV



Actuator Type	Flat Type
Poles	1 ~ 12
Operation Force	500 g
Washable	Yes

2.54 mm THT right angled Compact WS-DITU



Actuator Type	Flat Type ~ Raise Type
Poles	2 ~ 10
Operation Force	800 g

Rotary Switches

10 x 10 mm SMT IP67 WS-ROSV



Number of Position	10 ~ 16
Actuator Type	Arrow Type ~ Shaft Type
Code	Complement Code ~ Real Code
Washable	Yes

10 x 10 mm SMT IP67 WS-ROTV



Number of Position	8 ~ 16
Actuator Type	Arrow Type ~ Shaft Type
Code	Complement Code ~ Real Code
Washable	Yes

10 x 10 mm THT right angled WS-ROTU



Number of Position	10 ~ 16
Actuator Type	Arrow Type ~ Cross Type
Code	Complement Code ~ Real Code
Washable	Yes

10 x 10 mm Segment Wheel & Spindle WS-ROTV/ ROSV / ROTU



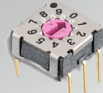
Color	Black ~ Red
-------	-------------

7 x 7 mm THT IP67 WS-ROSV



Number of Position	10 ~ 16
Actuator Type	Arrow Type
Code	Complement Code ~ Real Code
Washable	Yes

7 x 7 mm THT IP67 WS-ROTV



Number of Position	10 ~ 16
Actuator Type	Arrow Type
Code	Complement Code ~ Real Code
Washable	Yes

Incremental Encoder Switches

11.7 x 13.75 mm THT Encoder Metal Shaft with Threaded Bushing WS-ENTV



Detent	16 Positions ~ 30 Positions
Resolution	8 Pulse/360° ~ 20 Pulse/360°

NEW!

11.7 x 12 mm THT Encoder Metal Shaft with Plain Bushing WS-ENTV



Detent	30 Positions
Resolution	15 Pulse/360°

NEW!

12.4 x 13.2 mm THT Encoder Plastic Shaft WS-ENTV



Detent	12 Positions ~ 24 Positions
Resolution	12 Pulse/360° ~ 24 Pulse/360°
Bushing Type	No ~ Threaded

Slide Switches

10 x 2.5 mm THT WS-SLTV Opposite Side Connection



Switching Function	On-On
Electrical Life	2000 Steps
Schematic	SPDT

10 x 2.5 mm THT right angled WS-SLTV Opposite Side Connection



Switching Function	On-On
Electrical Life	2000 Steps
Schematic	SPDT

7.65 x 5.5 mm SMT WS-SLSV Same Side Connection



Switching Function	On-On
Electrical Life	20000 Steps
Schematic	DPDT

9.0 x 3.5 mm THT WS-SLTV Same Side Connection



Switching Function	On-On
Electrical Life	20000 Steps
Schematic	DPDT

6.7 x 2.7 mm SMT right angled WS-SLSU Same Side Connection



Switching Function	On-On
Electrical Life	10000 Steps
Schematic	SPDT

Slide Switches

NEW!

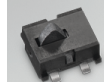
8.7 x 3.0 mm SMT WS-SLSU Same side connection



Switching Function	On-On
Electrical Life	10000 Times
Schematic	SPDT

Detector Switches

4.7 x 3.8 mm SMT WS-DESU



Schematic	SPST-NO
Operation Force	60 g
Electrical Life	100000 Cycles

5.7 x 4.0 mm SMT WS-DESU



Schematic	SPST-NC ~ SPST-NO
Operation Force	100 g
Electrical Life	100000 Cycles

Micro Switches

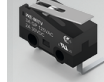
12.8 x 5.8 mm THT Micro switch WS-MITV vertical operation



Operation Force	80 g ~ 150 g
Releasing Force	5 g ~ 20 g
Schematic	SPDT

NEW!

12.8 x 5.8 mm THT Micro switch WS-MITV right angle operation



Operation Force	80 g ~ 150 g
Releasing Force	5 g ~ 20 g
Schematic	SPDT

Push Button Switches

9.8 x 18.5 mm THT right angled WS-PBTU



Schematic	SPDT
Operation Force	250 g
Electrical Life	30000 Cycles

Push Button Switches



9.8 x 18.5 mm SMT Side Push WS-PBSU

Schematic	SPDT
Operation Force	250 g
Electrical Life	30000 Cycles



Caps for 9.8 x 18.5 mm WS-PBSU / WS-PBTU

Color	Black ~ Red
-------	-------------

250 VAC Rocker Switches



19.2 x 12.9 mm Panel Cut-out WS-RSTV "0.187 Quick Connect"

Tab Width	4.75 mm
Schematic	DPST ~ SPST
Actuator Color	Black



27.6 x 13.8 mm Panel Cut-out WS-RSTV, 0.25 "Quick connect"

Tab Width	6.3 mm
Schematic	SPST
Actuator Color	Black

NEW!



IP65 Ø20.2 mm Panel Cut-out WS-RSTV, 0.187 "Quick Connect"

Tab Width	4.8 mm
Schematic	SPST
Actuator Color	Black



Ø 20.2 mm Panel Cut-Out WS-RSTV, 0.187 "Quick connect"

Tab Width	4.8 mm
Schematic	DPST ~ SPST
Actuator Color	Black

NEW!



Illuminated Ø 20.2 mm Panel Cut-out WS-RSTV, 0.187 "Quick connect"

Tab Width	4.8 mm
Schematic	SPST
Voltage	110 V (AC) ~ 220 V (AC)
Actuator Color	Amber Transparent ~ Red Transparent

NEW!



Protection cover for WS-RSTV Rocker Switch cut out Ø20.2 mm

Type/Size	Ø24,4mm
Material	PVC
Color	Transparent

Illuminated Switches



12 x 12 mm THT Illuminated Tact Switch WS-TATL

Height	8.2 mm
Emitting Color	Blue ~ Yellow
Electrical Life	100000 Times



Caps for 12 x 12 mm WS-TATL

Base Color	Black ~ Transparent
------------	---------------------



6.8 x 4.5 mm SMT Illuminated Tact Switch WS-TASL

Height	2.5 mm
Emitting Color	Blue & Blue ~ Yellow & Yellow
Electrical Life	50000 Times



20 x 20 mm THT Illuminated Rotary Push Button Switch WS-RPTL

Height	14.45 mm
Emitting Color	Red & Bright Green



15 x 15 mm THT Illuminated Push Button switch WS-PBTL

Height	19.5 mm
Emitting Color	Red & Green ~ Red & Green & Blue



Caps for 15 x 15mm illuminated Push Button switch WS-PBTL

Base Color	Transparent
------------	-------------

SMT Spacers



WP-SMRA

Material	Brass
Length	5.5 mm ~ 7 mm
Inner Diameter	3.3 mm
Inner Thread	M2 ~ M3



WA-SMSSR

Material	PA66 ~ Steel
Length	2 mm ~ 10 mm
Color	Red
Inner Diameter	2.1 mm ~ 4.2 mm



WA-SMSI

Material	Steel
Inner Thread	M1.6 ~ M5
Length	0.5 mm ~ 16 mm



WA-SMST

Material	Steel
Length	1 mm ~ 16 mm
Hole Diameter	3.3 mm



WA-SMSE

Material	Steel
Thread	M3
Length	5 mm ~ 15 mm



WA-SMSA Automotive

Material	Steel
Length	1 mm ~ 15 mm
Hole Diameter	3.3 mm
Thread	M3



WA-EXRV Mounting Button

Material	PA66
Color	Black ~ Red



WA-SMSR

Material	Steel
Thread	M3
Hole Diameter	3.2 mm



WA-SCRW

Material	Nylon 66
Thread	M3
Length	4 mm ~ 10 mm
Color	Natural



WA-SCAP

Material	PA66
Color	Red

Spacer Studs & Round Spacers

WA-SPAIE

Material	Polyamide
Inner Thread	M2.5 ~ M4
Length	5 mm ~ 65 mm
Color	Black

WA-SPAII

Material	Polyamide
Inner Thread	M2.5 ~ M4
Length	5 mm ~ 45 mm
Color	Black

WA-SBRIE

Material	Brass
Inner Thread	M2 ~ M4
Length	5 mm ~ 45 mm

WA-SBRII

Material	Brass
Inner Thread	M2 ~ M4
Length	5 mm ~ 45 mm

WA-SSTIE

Material	Steel
Inner Thread	M2.5 ~ M6
Length	5 mm ~ 70 mm

WA-HEX

Material	Steel
Inner Thread	M3 ~ UNC 4/40
Length	10 mm ~ 18.2 mm

WA-SSTII

Material	Steel
Inner Thread	M2.5 ~ M6
Length	5 mm ~ 80 mm

WA-SBRRO

Material	Brass
Length	1 mm ~ 20 mm
Inner Diameter	3.2 mm ~ 4.3 mm

WA-SPARO

Material	Polyamide
Length	2 mm ~ 20 mm
Color	Black
Inner Diameter	2.2 mm ~ 5.2 mm

Spacers

Spacers

Material	Nylon 66
Length	1.5 mm ~ 80 mm

Cable Holder, Mounting Tabs & Cable Lugs

Cable Holders SMT / Snap-In / Adhesive

Material	Nylon 66
Color	Black ~ Natural

Cable Lugs

Material	Cu-EPT, EN13600
Surface	Tin
Wire Cross Section	1.5 mm ² ~ 95 mm ²
Screw	M3 ~ M10

Heat Shrink Tubes

WA-HST

Inner Diameter	0.5 mm ~ 50.8 mm
Rate of Shrinking	2:1 ~ 3:1

Plastic Caps

Extended!

WA-PCCA

Type	HDMI ~ USB C
Material	ABS ~ TPE

REDCUBE PRESS-FIT

WP-BUTR

Inner Thread	M3 ~ M10
Operating Temperature	-55 °C up to +150 °C
Thread Length	5 mm ~ 11 mm
Rated Current	100 A ~ 320 A

WP-BUCF

Inner Thread	M2.5 ~ M10
Operating Temperature	-55 °C up to +150 °C
Thread Length	6 mm ~ 17.5 mm
Rated Current	130 A ~ 350 A

WP-BUFU

Inner Thread	M3 ~ M10
Operating Temperature	-55 °C up to +150 °C
Thread Length	3.5 mm ~ 11 mm
Rated Current	70 A ~ 350 A

WP-SHFU

Operating Temperature	-55 °C up to +150 °C
Thread Length	5 mm ~ 16 mm
Rated Current	130 A ~ 350 A

WP-RATR

Inner Thread	M3 ~ M8
Operating Temperature	-55 °C up to +150 °C
Thread Length	4 mm ~ 8 mm
Rated Current	100 A ~ 240 A

WP-RAFU

Inner Thread	M3 ~ M10
Operating Temperature	-55 °C up to +150 °C
Thread Length	4 mm ~ 10 mm
Rated Current	130 A ~ 350 A

WP-TGTR

Operating Temperature	-55 °C up to +150 °C
Rated Current	160 A ~ 320 A

WP-TGCF

Operating Temperature	-55 °C up to +150 °C
Rated Current	175 A ~ 240 A

WP-TPSE

Inner Thread	M3 ~ M8
Operating Temperature	-55 °C up to +150 °C
Thread Length	5 mm ~ 13 mm
Outer Diameter	8 mm ~ 15 mm

REDCUBE PLUG

WP-PLUG

Wire Cross Section	4 mm ² ~ 16 mm ²
Packaging	Bulk
Rated Current	50 A ~ 120 A

REDCUBE SMT



WP-SMBU

Inner Thread	M3 ~ M5
Thread Length	4 mm ~ 6 mm
Rated Current	50 A ~ 70 A

Extended!



WP-SMRT

Inner Thread	M3 ~ M5
Thread Length	5.6 mm
Rated Current	85 A



WP-SMSH

Thread Length	5 mm
Rated Current	50 A



WP-SMRA

Inner Thread	M3
Rated Current	50 A

REDCUBE THR



WP-THRBU

Inner Thread	M3 ~ M5
Thread Length	2.5 mm ~ 4 mm
Rated Current	50 A ~ 85 A



WP-THRSH

Thread Length	5 mm ~ 7 mm
Rated Current	50 A ~ 85 A